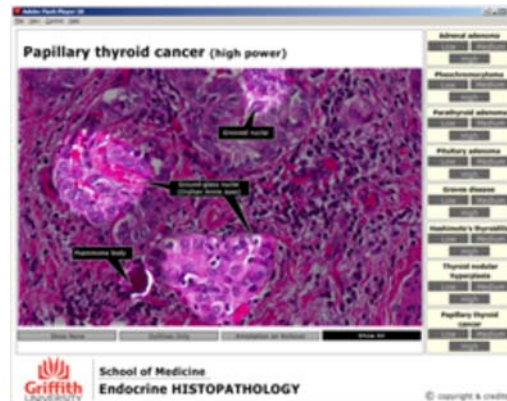


Griffith Portal

Navigation trail

Griffith Portal > Computing > Blended learning support > Learning objects showcase > Histopathology

Histopathology



Title of Resource

Endocrine Histopathology
Female reproductive Histopathology
Gastrointestinal Histopathology

Resource Type

Adobe Flash interactive (.swf)

Access

These interactives are currently deployed in the School of Medicine Resource Management Database (not accessible to staff and students outside the MBBS program). Access to a copy can be arranged on request.

Description of Resource

These interactives allow a student to view a number of pathology microscope slide images (usually one each at low, medium and high magnification) of various pathologies. There are four modes, which allow the student to self-test their knowledge about significant features on the selected slide i.e. No annotation / Features outlined by shading, no annotation / Feature annotation becomes visible on mouseover of feature area / All features outlined and annotations visible. The screen capture above shows the last of these modes. The menu on the right hand side allows the student to select another pathology and magnification.

Learning Strategy

The intended audience is Year 2 MBBS students, who encounter this material in a series of workshops. They can review the images at their own time and place and pace. The interactive allows the student to carry out their own formative self assessment regarding the location and names of significant features.

Subject Keywords

Pathology, histopathology, microscope, slide, endocrine, female, reproductive, gastrointestinal, medicine, cancer

Academic Contributors

Professor Alfred Lam
Dr Kais Kasem

INS, Learning and Teaching Team

INS, L&T Medicine team
Robert Loudon

If you want to use this resource

This resource may require some re-development to be used in another context. If you are interested in using this resource in your course contact the Director, Information Services (Learning & Teaching) to discuss.

([INS-Learning and Teaching](#)⁴⁷)

Links

1. <https://intranet.secure.griffith.edu.au/computing/account-management>
2. <https://intranet.secure.griffith.edu.au/computing/application-development-consulting>
3. <https://intranet.secure.griffith.edu.au/computing/blended-learning-support>
4. <https://intranet.secure.griffith.edu.au/computing/blended-learning-support/learning@griffith-upgrade-project>
5. <https://intranet.secure.griffith.edu.au/computing/blended-learning-support/learning-and-teaching-design>
6. <https://intranet.secure.griffith.edu.au/computing/blended-learning-support/using-learning-at-griffith>
7. <https://intranet.secure.griffith.edu.au/computing/blended-learning-support/using-lecture-capture>
8. <https://intranet.secure.griffith.edu.au/computing/blended-learning-support/using-itunesu>
9. <https://intranet.secure.griffith.edu.au/computing/blended-learning-support/showcase>
10. <https://intranet.secure.griffith.edu.au/computing/blended-learning-support/showcase/dentistry>
11. <https://intranet.secure.griffith.edu.au/computing/blended-learning-support/showcase/environmental-milestones>
12. <https://intranet.secure.griffith.edu.au/computing/blended-learning-support/showcase/story-of-a-river>
13. <https://intranet.secure.griffith.edu.au/computing/blended-learning-support/showcase/lams>
14. <https://intranet.secure.griffith.edu.au/computing/blended-learning-support/showcase/vart>
15. <https://intranet.secure.griffith.edu.au/computing/blended-learning-support/showcase/changes-through-time>
16. <https://intranet.secure.griffith.edu.au/computing/blended-learning-support/showcase/histopathology>
17. <https://intranet.secure.griffith.edu.au/computing/blended-learning-support/staff-training>
18. <https://intranet.secure.griffith.edu.au/computing/blended-learning-support/accessibility>
19. <https://intranet.secure.griffith.edu.au/computing/blended-learning-support/getting-help>
20. <https://intranet.secure.griffith.edu.au/computing/blended-learning-support/contact-us>
21. <https://intranet.secure.griffith.edu.au/computing/desktop-support>
22. <https://intranet.secure.griffith.edu.au/computing/devices>
23. <https://intranet.secure.griffith.edu.au/computing/enterprise-information-systems-support>
24. <https://intranet.secure.griffith.edu.au/computing/eresearch-support>
25. <https://intranet.secure.griffith.edu.au/computing/griffith-portal-support>
26. <https://intranet.secure.griffith.edu.au/computing/high-performance-computing>
27. <https://intranet.secure.griffith.edu.au/computing/internet-access>
28. <https://intranet.secure.griffith.edu.au/computing/help-form>
29. <https://intranet.secure.griffith.edu.au/computing/it-security>
30. <https://intranet.secure.griffith.edu.au/computing/instant-messaging>
31. <https://intranet.secure.griffith.edu.au/computing/list-management>
32. <https://intranet.secure.griffith.edu.au/computing/media-services>
33. <https://intranet.secure.griffith.edu.au/computing/mobile-technologies-practices>
34. <https://intranet.secure.griffith.edu.au/computing/mobilesync>
35. <https://intranet.secure.griffith.edu.au/computing/remote-access>
36. <https://intranet.secure.griffith.edu.au/computing/servers>
37. <https://intranet.secure.griffith.edu.au/computing/service-desk>
38. <https://intranet.secure.griffith.edu.au/computing/software>
39. <https://intranet.secure.griffith.edu.au/computing/staff-email>
40. <https://intranet.secure.griffith.edu.au/computing/student-computing>
41. <https://intranet.secure.griffith.edu.au/computing/student-email-support>
42. <https://intranet.secure.griffith.edu.au/computing/team-collaboration>
43. <https://intranet.secure.griffith.edu.au/computing/videoconferencing>
44. <https://intranet.secure.griffith.edu.au/computing/visualisation>
45. <https://intranet.secure.griffith.edu.au/computing/wireless>
46. <https://intranet.secure.griffith.edu.au/computing/web-publishing>
47. http://www.griffith.edu.au/cgi-bin/phone_search.pl?format=browse&group=Information%20Services&school=Learning%20and%20Teaching

This document has been optimised for printing, some elements from the original webpage may have been altered or removed.